

Note:

- - - Dotted arrows indicate correspondence between EMA, SP Group and EMC, which may be transparent to consumers.
- * Solar PV owners must register their facility if it is ≥ 1MWac but may register their < 1MWac facility if they wish to get paid. Facility registration can be either with SPS or EMC, based on the following:
 - o Non-contestable Consumers (NCC) with embedded facility < 1MWac and Contestable Consumers (CC) with embedded facility < 10MWac can register their facility with SPS under the Simplified Credit Scheme (SCS) and Enhanced Central Intermediary Scheme (ECIS) respectively. Pls refer to https://www.ema.gov.sg/Guide_to_Solar_PV.aspx for more information.
 - o NCCs cannot register their embedded facility with EMC.
- If customer opts for no rebate, replacement of M2 Load Meters from Single-directional to Bi-directional meter is not required.

Turn-on Pre-requisite:

- * PV application submissions to use the latest version of [Application for Net Export Rebate](#) form.
- ** Register with EMC for embedded facilities ≥ 10MWac, and for all standalone facilities.
- ^ Refer to Checklist of Supporting Documents Required (Section G) in Application form for MP Registration downloadable [here](#)
- ^^ Refer to Checklist of Supporting Documents Required (Section D/E/F) in the applicable Application form for CGF / GSF / PGSF / NEIGF registration downloadable [here](#)
- Obtain the necessary Generation Licence and PSO Approval Document if facility is ≥ 1MWac
- Connection Agreement in Checklist for CGF / GSF / NEIGF registration refers to:
 - o HT & above consumers to approach SPS to sign **Supplemental Agreement** for PV installed at consumer's premises.
 - o Obtain **Letter PV2**

Appendix 1: Solar PV - User Guide for Distribution

Disclaimer: The successful progress into the next stage is contingent on the correctness and completeness of the submissions.

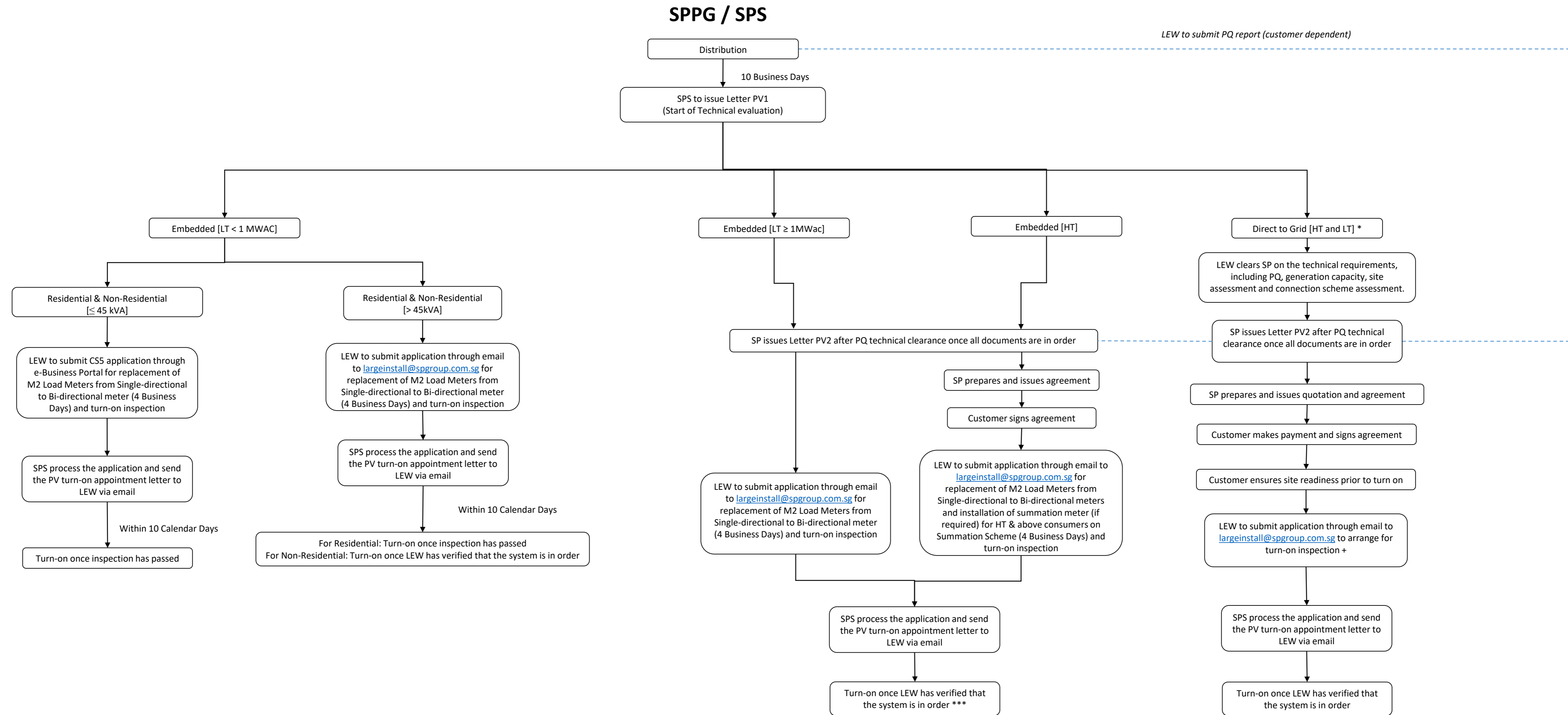


Figure 1: Overview Process for Residential & Non-Residential Consumers with Solar PV Systems (Distribution)

Note:

- LEW may submit CS1 before PV is installed to expedite the turn-on process.
- Documents must be in order, for SPS to process the PV application.
- Turn-on appointment date is subjected to LEW's availability and request.
- Turn-on inspection by SPS Electrical Installation Testers in the presence of PV LEW is required for the installation with load less than 45kVA and residential installation with load more than 45kVA.
- Solar PV owners must register their facility if it is ≥ 1MWac but may register their < 1MWac facility if they wish to get paid. Facility registration can be either with SPS or EMC, based on the following:
 - Non-contestable Consumers (NCC) with embedded facility < 1MWac and Contestable Consumers (CC) with embedded facility < 10MWac can register their facility with SPS under the Simplified Credit Treatment Scheme (SCT) and Enhanced Central Intermediary Scheme (ECIS) respectively. Pls refer to https://www.ema.gov.sg/Guide_to_Solar_PV.aspx for more information.
 - NCCs cannot register their embedded facility with EMC.
 - If customer opts for no rebate, replacement of M2 Load Meters from Single-directional to Bi-directional meter is not required.
- For PV ≥ 1MWac, SPPG will witness the commissioning of solar PV system on the scheduled Turn-On-Date for voltage level up to HT. (Applicable for ≥ 1MWac)
- LEW to submit PV Commissioning report, SOTO and relevant documents to PVDN@sppgroup.com.sg
- Owner's Engineer or Consultant to witness the site test for PV dynamic model (if applicable) and customer to submit revised model and update the simulation report (if any) as per Transmission Code.
- Direct to Grid scheme is typically for metering scheme that does not support the installation of Solar PV System.

Turn-on Pre-requisite:

- PV application submissions to use the latest version of [Application for Net Export Rebate](#) form.
- + For Direct to Grid [HT and LT],
 - Customer needs to open a load account with SPS and submit the Opening Account Letter for the arrangement of turn-on.
 - LEW to ensure that private generation meters are fixed before arranging for turn on inspection.
 - LEW to ensure all private generation metering details are provided in the Net Export Rebate form.
- Obtain the necessary Generation Licence and PSO Approval Document if facility is ≥ 1MWac
- Connection Agreement in Checklist for CGF / GSF / NEIGF registration refers to:
 - HT & above consumers to approach SPS to sign **Supplemental Agreement** for PV installed at consumer's premises.
 - Obtain **Letter PV2**

Appendix 2: Solar PV - User Guide for Transmission

Disclaimer: The successful progress into the next stage is contingent on the correctness and completeness of the submissions.

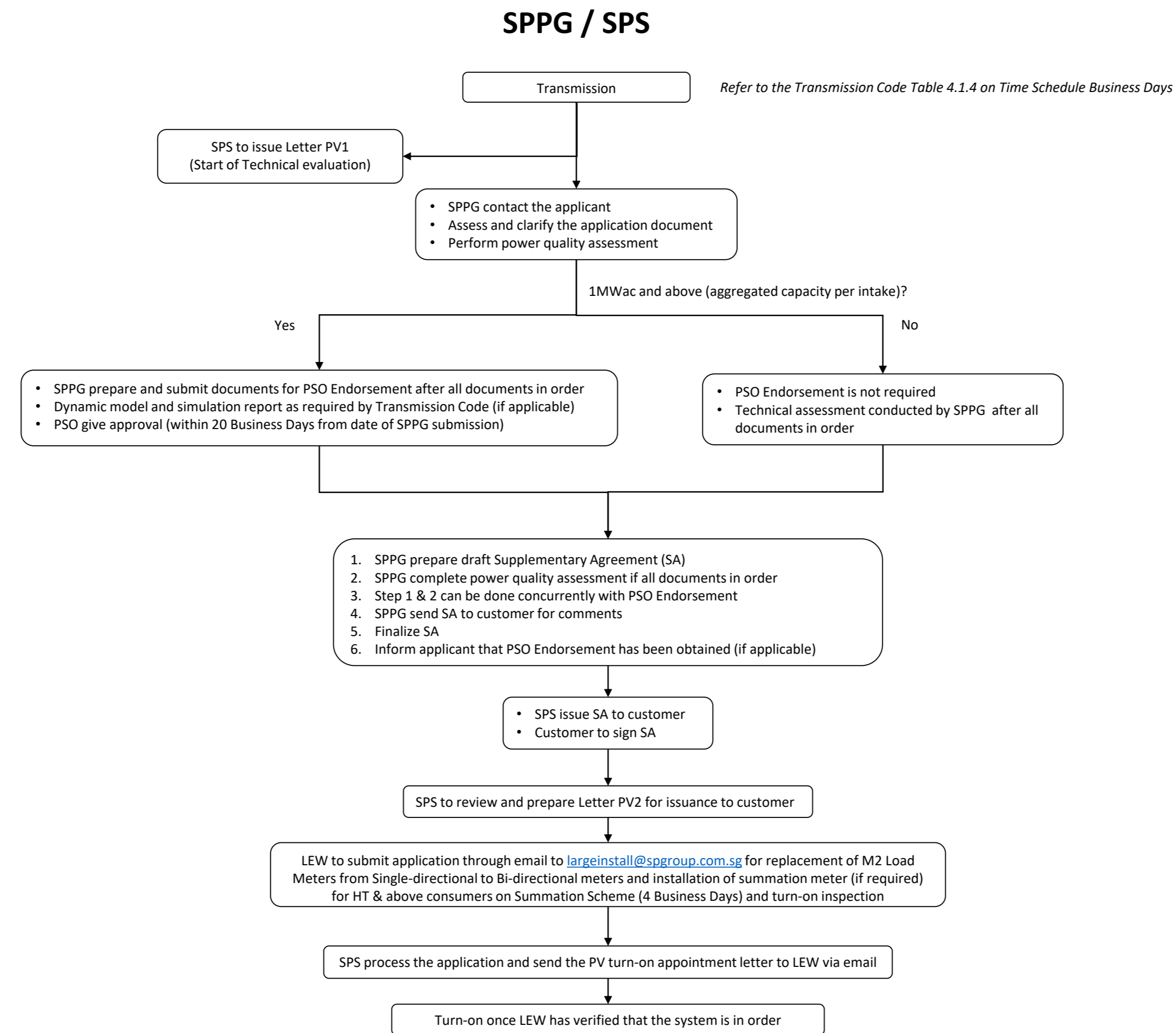


Figure 2: Overview Process for Consumers with Solar PV Systems (Transmission)

Note:

- LEW may submit CS1 before PV is installed to expedite the turn-on process.
- Documents must be in order, for SPS to process the PV application.
- Turn-on appointment date is subjected to LEW's availability and request.
- * Solar PV owners must register their facility if it is $\geq 1\text{MWac}$ but may register their $< 1\text{MWac}$ facility if they wish to get paid. Facility registration can be either with SPS or EMC, based on the following:
 - Non-contestable Consumers (NCC) with embedded facility $< 1\text{MWac}$ and Contestable Consumers (CC) with embedded facility $< 10\text{MWac}$ can register their facility with SPS under the Simplified Credit Treatment Scheme (SCT) and Enhanced Central Intermediary Scheme (ECIS) respectively. Pls refer to https://www.ema.gov.sg/Guide_to_Solar_PV.aspx for more information.
 - NCCs cannot register their embedded facility with EMC.
 - If customer opts for no rebate, replacement of M2 Load Meters from Single-directional to Bi-directional meter is not required.
 - LEW to submit PV Commissioning report, COC and relevant documents to Maintenance Section in charge (EHVN, RN).
 - Owner's Engineer or Consultant to witness the site test for PV dynamic model (if applicable) and customer to submit revised model and update the simulation report (if any) as per Transmission Code.

Turn-on Pre-requisite:

- PV application submissions to use the latest version of [Application for Net Export Rebate](#) form.
- Obtain the necessary Generation Licence and PSO Approval Document if facility is $\geq 1\text{MWac}$
- Connection Agreement in Checklist for CGF / GSF / NEIGF registration refers to:
 - HT & above consumers to approach SPS to sign **Supplemental Agreement** for PV installed at consumer's premises.
 - Obtain **Letter PV2**